



EC type-examination certificate

Certificate no.: AGB 209/2

Notified body: TÜV SÜD Industrie Service GmbH
Westendstr. 199
80686 München - Germany

**Applicant/
Certificate holder:** P.F.B. s.r.l.
Via Raimondo Dalla Costa, 690
41122 Modena - Italy

Date of application: 2011-11-11

Manufacturer of the test sample: P.F.B. s.r.l.
Via Raimondo Dalla Costa, 690
41122 Modena - Italy

Product: Overspeed governor

Type: LK 200/T

Test laboratory: TÜV SÜD Industrie Service GmbH
Prüflaboratorium für Produkte der Fördertechnik
Prüfbereich Aufzüge und Sicherheitsbauteile
Westendstr. 199
80686 München - Germany

**Date and
number of the test report:** 2011-12-02
AGB 209/2

EC-Directive: 95 / 16 / EC

Result: The safety component conforms to the essential safety requirements of the Directive for the respective scope of application stated on page 1 of the annex to this EC type-examination certificate.

Date of issue: 2011-12-05

Certification body for lifts and safety components
Identification number: 0036

C. Rührmeyer
Christian Rührmeyer





Industrie Service

**Enclosure of EC type-examination certificate
no. AGB 209/2 dated 2011-12-05**

Authorised manufacturers – production sites (stated: 2011-12-05):

P.F.B. s.r.l.

Via Raimondo Dalla Costa, 690
41122 Modena - Italy

- END OF DOCUMENT -

Base: Letter of Co. P.F.B. s.r.l. dated 2011-11-11



**Annex to the EC type-examination certificate
No. AGB 209/2 dated 2011-12-05**

1 Scope of application

- 1.1 Permissible tripping speed 0.87 – 1.77 m/s
- 1.2 Permissible rated speed ≤ 1.54 m/s
- 1.3 Driving rope
- 1.3.1 Category Round strand rope made of steel wire
- 1.3.2 Diameter 6 – 6.5 mm
- 1.4 Tension forces (force produced by the tensioning weight, acting on the axle of pulley)

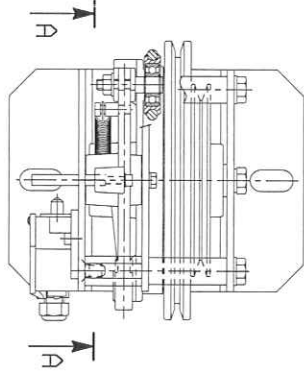
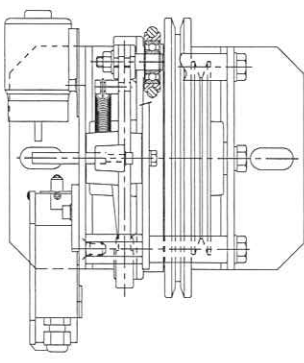
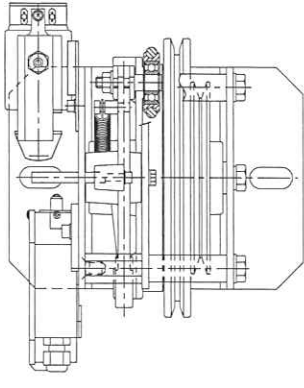
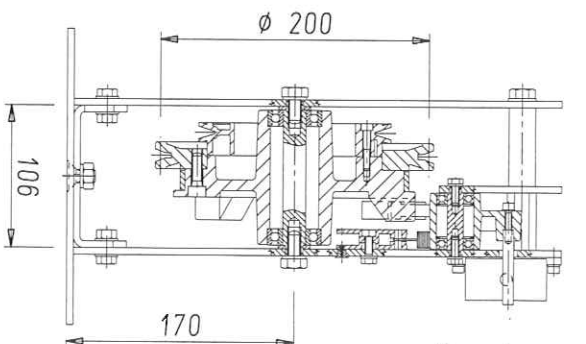
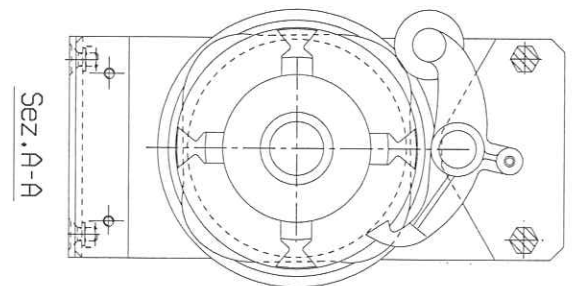
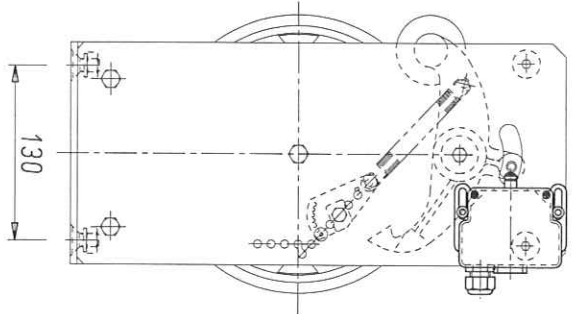
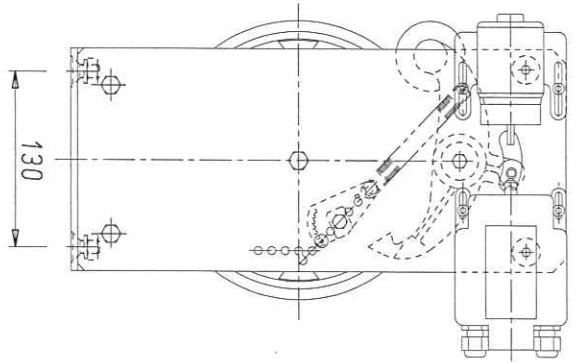
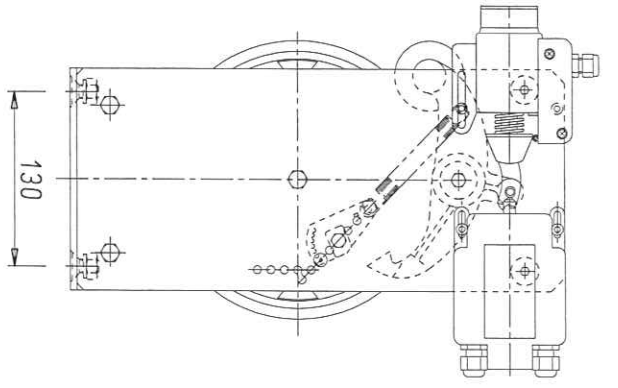
Tension force determined in the test [N] (New rope and groove)	Tensile force in	
	Down direction [N]	Up direction [N]
780	1308	----
1219	1733	408

2 Conditions

- 2.1 The adjusted tripping speed and the safety switch must be sealed against unauthorized adjustment (safety switch e.g. by colour sealing of the fastening bolts).
- 2.2 Rope deflection no special requirements (but at least 180° angle of wrap).

3 Remarks

- 3.1 Retraction of the safety gear in both directions of rotation permissible
- 3.2 Possible equipments:
- Preliminary switch off
 - Remote tripping device
 - Remote resetting device of the safety switch
 - Magnetic sensor
- 3.3 In order to provide identification and information about the basic design and its functioning and to show the environmental conditions and connection requirements pertaining to the tested and approved type, and to differentiate it from others, drawing LK_200/T certification stamp dated 2011-12-05 is to be enclosed with EC type-examination certificate and the annex thereto.
- 3.4 The EC type-examination certificate may only be used in connection with the pertinent annex and the list of the authorized manufacturers (according to enclosure). This enclosure shall be updated and re-edited following information of the certificate holder.



- 5. Dez. 2011
 - GEPRÜFT -
 TÜV SÜD Industrie Service GmbH
 Zentralforschung Förderertrieb-Standardbau
 Abteilung Anzüge und Sicherheitstechnik
 Westendstr. 190 D-80696 München
 Der Sachverständige



1	10/11	AGGIUNTA VARIANTE CON ELETTROMAGNETE
NO. DRTA		DESCRIZIONE
NO. DRTLT		BESCHREIBUNG
MODIFICHE - MODIFIKATIONEN		

Smussi non quotati	/45°	scala 1:4	q.ta°	LAVOR. GEN.	NOTE
Raggi non quotati				MATERIALE	
TOLL. QUOTE LIBERE		COMPLESSIVO			
S.L. RUGOS. TOLL. MAX.					
∇	+ 0.2	GRUPPO LIMITATORE LK_200/T			
∇∇	+ 0.15				
∇∇∇	+ 0.1	INTERNATIONAL APPLICATION N° PCT/EP97/00466			
∇∇∇∇	+ 20°				
⊙	0.04	COMPONENTI MECCANICI			
⊙	0.04				
∕∕	0.04	PER ASCENSORI			
IL PRESENTE DISEGNO E' DI PROPRIETA' DELLA PFB SRL, NE E' VIETATA LA DIVULGAZIONE A TERTI DI LEGGE, SENZA AUTORIZZAZIONE		CDI. N° 8024200220 DIS. N° LK_200/T DATA 11/1/01			