

Hongsheng Elevator

ADD: NO.73 EAST CHANGJIANG ROAD, JINGANG TOWN,  
ZHANGJIAGANG CITY, JIANGSU PROVINCE, CHINA

Tel: 0086-0512-58728018

Fax: 0086-0512-58728011

Http: [www.hongsheng-elevator.com](http://www.hongsheng-elevator.com)

E-mail: [hongsheng@hongsheng-elevator.com](mailto:hongsheng@hongsheng-elevator.com)



# HONGSHENG ELEVATOR



# 中国最大的冷拔电梯导轨生产企业

The largest enterprises manufacturing cold drawn elevator guide rails in China.

## 公司荣誉 Company Honor



## 主要产品 Main Products

STANDARD GUIDE RAILS



HIGH QUALITY GUIDE RAILS



HOLLOW G.R.



COLD DRAWN G.R.



FISHPLATES



CLIPS



BRACKETS





热情、创新、永不止步。  
ENTHUSIASM, INNOVATION, AND NEVER STOP

## HONG SHENG ELEVATOR PARTS MANUFACTURING CORPORATION

Hengsheng Elevator Parts Manufacturing Corporation, possesses geological and economic advantages beyond compare by being situated near the Changjiang River and the rich and beautiful Golden Delta of the south Jiangsu Province and being adjacent to Zhangjiagang International Port and Zhangjiagang Free Trade Zone.

Founded in 2008, the company is a large-scale industrial manufacturer by combining researching, manufacturing and operating (self-support export) business together. Boasting its strong technological strength, advanced processing equipment and sophisticated quality system, the company's main products include cold-drawn elevator guide rails and hot-rolling machining elevator guide rails. The company has established its own technological research and development center to research develop and manufacture all kinds of nonstandard elevator guide rails. With current annual producing capacity of 30,000 tons of machining guide rails and 20,000 tons of cold

drawn guide rails, the company's client network spreads all over the world and it ranks among the largest enterprises manufacturing cold drawn elevator guide rails in China.

The company sticks to pursuing survival and development on the basis of quality. By virtue of sophisticated quality management system, the company successfully passed the ISO9001-2008 quality system certification. We are committed to making your best partner and supplier through constant efforts by demonstrating our commitment into the detail of our products.

TO BE YOUR SMART BUSINESS PARTNER  
FOR ELEVATOR PARTS AND SYSTEM

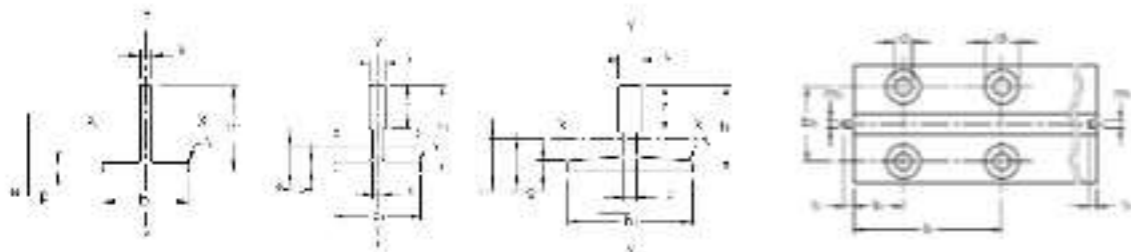


# Standard Cold Drawn Guide Rails

Guide rails comply with the requirements of ISO7465-2007, perfect quality control in process.

## DIMENSIONS

Item	B1	B2	e	e1	e2	z	g	f	ra	rb	rc	l1	lr	h	d1	d2	b	h	
	mm	mm	mm	mm	mm	mm	mm	mm	mm	mm	mm	mm	mm	mm	mm	mm	mm	mm	mm
Tolerances	+0.5	+0.2	+0.18	0	0	+0.5				+0.05	+0.05	+0.1	+0.1		+0.2	+0.2	+0.2		
T45/A	45	45	5			5			1					9		25	65	15	
T50/A	50	50	5			5			1					9		30	75	25	
T70/A	70	65	9	34	6		6	8	1.5	3	2.95	3.5	3	13		42	105	25	



## KEY FACTORS



## TECHNICAL CHARACTERISTICS

Item	S	W	e	h <sub>1</sub>	W <sub>1</sub>	h <sub>2</sub>	h <sub>3</sub>	W <sub>2</sub>	h <sub>4</sub>
	mm <sup>2</sup>	kg/m	mm	mm <sup>2</sup>	mm <sup>2</sup>	mm	mm <sup>2</sup>	mm <sup>2</sup>	mm
T45/A	4.25	3.34	1.31	6.08	2.53	1.38	3.64	1.71	0.95
T50/A	4.75	3.73	1.43	11.24	3.15	1.54	5.25	2.1	1.05
T70/A	9.51	7.47	2.04	41.3	9.24	2.09	18.65	5.35	14

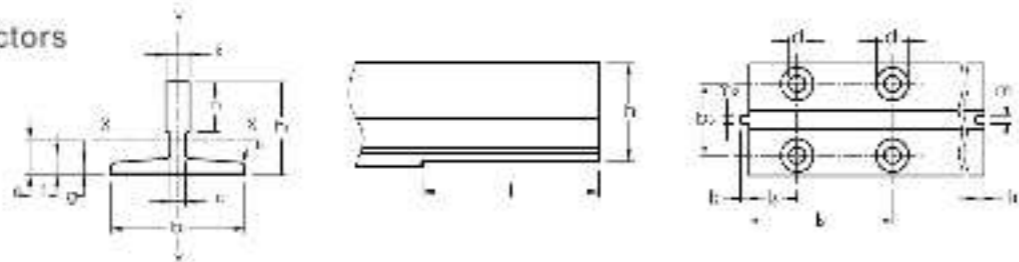
# Standard Machined Guide Rails

Guide rails comply with the requirements of ISO7465-2007, perfect quality control in process.

## DIMENSIONS

Type	B		H		L		K		S		T		W		X		Y		Z		
	mm	inch	mm	inch	mm	inch	mm	inch	mm	inch	mm	inch	mm	inch	mm	inch	mm	inch	mm	inch	
T70-38	70	80	54	0	34	6	8	8	1.5	3	2.95	3.5	3	128	13	35	42	100	25		
T75-38	75	82	61	0	38	8	7	0	3	3	2.96	3.5	3	125	13	29	43	89	30		
T75M	75	56	55	0	38	7	6	8.5	3	3	2.96	3.5	3	120	13	35	43	88	30		
T80B	82.5	50.25	66.8	0	25.4	7.5	8	8.25	3	3	2.95	3.5	3	111	13	20	50.8	83	27		
T85B	88	82	61	16	33.4	18	7.5	11.1	3	6.4	6.57	7.14	6.35	106	13	26	57.2	114.3	36.1		
T85G	88	75	74	16	42	18	8	10	4	6.4	6.57	7.14	6.35	106	13	25	57.2	114.3	36.1		
T114B	114	88.3	88	10	38	9.5	7.9	11.1	4	6.4	6.57	7.14	6.35	106	17	33	79.4	114.3	36.1		
T127-16	127	88.3	88	16	44.5	18	7.9	11.1	4	6.4	6.57	7.14	6.35	106	17	33	79.4	114.3	36.1		
T127-28	127	88.3	88	16	53.8	18	12.7	15.9	5	6.4	6.57	7.14	6.35	106	17	33	79.4	114.3	36.1		
T146-16	140	106	107	19	38.8	12.7	10.7	15.9	5	6.4	6.57	7.14	6.35	103	21	40	82.1	152.4	31.8		
T146-28	140	102	101	28.9	38.8	17.5	14.5	17.5	5	6.4	6.57	7.14	6.35	103	21	40	82.1	152.4	31.8		
T146-38	140	127	126	31.75	37.2	18	17.5	25.4	5	6.4	6.57	7.14	6.35	103	21	40	82.1	152.4	31.8		

## Key Factors



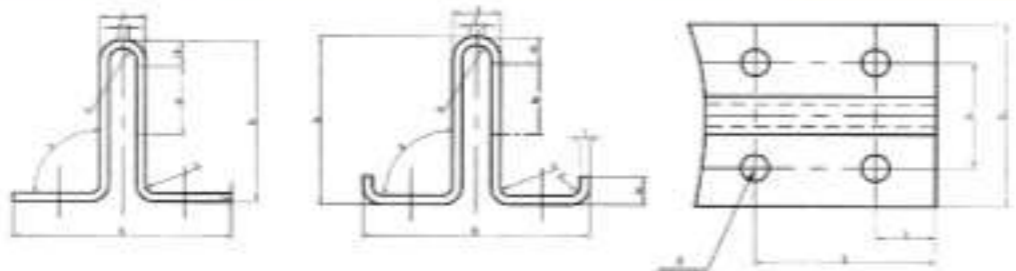
## TECHNICAL CHARACTERISTICS

Type	B	H	L	W	W <sub>0</sub>	W <sub>1</sub>	W <sub>2</sub>	W <sub>3</sub>	W <sub>4</sub>
	mm	mm	mm	mm	mm	mm	mm	mm	mm
T75-38	10.89	8.83	1.06	48.26	9.29	1.50	26.49	7.04	1.00
T75B	0.94	7.73	1.00	29.3	7.58	1.47	26.1	6.71	1.03
T80B	10.9	8.93	1.06	49.4	10.2	2.13	30.5	7.4	1.07
T85B	15.7	12.3	2.02	58.52	14.25	1.96	52.4	11.8	1.61
T90B	17.25	13.25	2.01	100	16.07	2.43	52.4	11.8	1.70
T114B	20.88	16.37	2.07	178	26.7	2.60	106	19.1	2.28
T127-16	22.64	17.77	2.70	184.2	30.4	2.87	148	23.4	2.50
T127-28	28.83	22.48	2.47	198.4	30.8	2.63	200	26.2	2.83
T140-16	36.2	27.6	3.04	404	50.4	3.38	210	44.3	2.97
T140-28	43.22	33.92	3.47	457	68	3.25	258	51.2	2.88
T146-38	58.57	46	4.38	563	114.8	4.03	406	69.4	2.88



## Hollow Guide Rail

Guide rails comply with the requirements of ISO7465-2007, perfect quality control in process.



### DIMENSIONS AND TOLERANCES

Dimensions in millimetres

Item	H	h	T	U	U <sub>1</sub>	V	W	h <sub>1</sub>	h <sub>2</sub>	h <sub>3</sub>	h <sub>4</sub>	h <sub>5</sub>	h <sub>6</sub>
Flat edge type	Tolerances												
	±1.0	—	+0.2 -0.15	0 -0.5	—	±0.40	—	—	+90° +20°	±0.5	±0.5	±0.5	—
TK3	75	≥1.8	2	55±0.2	—	10±0.2	20	5	90°	43	50	30	10
TK5	87	≥1.8	3	60	—	16.4	25	3	90°	50	50	20	14
Lifted edge type	Tolerances												
	±1.0	—	+0.2 -0.15	±0.3	±1.0	±0.45	—	—	+90° +20°	±0.5	±0.5	±0.5	—
TK3A	78	≥1.8	2.2	60	50	16.4	25	3	90°	45	75	25	11.5
TK5A	78	≥1.8	3.2	60	50	16.4	25	3	90°	45	75	25	11.5

### TECHNICAL CHARACTERISTICS OF GUIDE RAILS

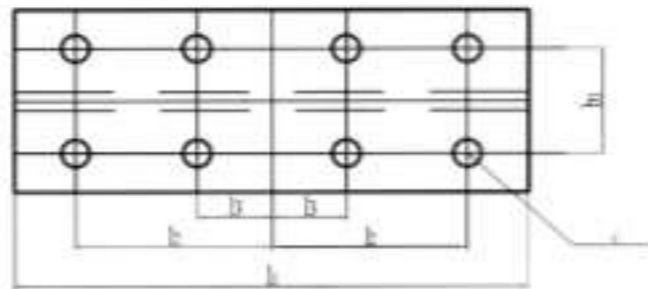
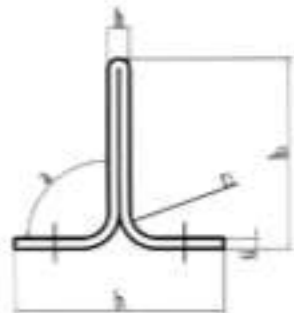
Item	S	W <sub>1</sub>	W <sub>2</sub>	I <sub>1</sub>	W <sub>1</sub>	I <sub>2</sub>	I <sub>3</sub>	W <sub>1</sub>	I <sub>3</sub>
	cm <sup>2</sup>	kg/m	cm	cm <sup>2</sup>	cm <sup>2</sup>	cm	cm <sup>2</sup>	cm <sup>2</sup>	cm
TK3	3.48	2.74	1.86	11.89	3.27	1.85	6.47	1.73	1.36
TK5	5.86	4.60	2.15	26.90	6.99	2.08	18.61	4.28	1.73
TK3A	4.36	3.40	2.18	18.09	4.74	2.04	13.62	3.49	1.77
TK5A	6.17	4.85	2.14	24.33	6.30	1.99	18.78	4.82	1.74

### KEY FACTORS OF GUIDE RAILS

Straightness		B/m	0.5mm
		B/5m	2.5mm
Twist		β   ≤ 1 mm	
Perpendicularity		P=0.30mm	
		M=0.20mm	

## Fishplates for Hollow Guide Rail

Guide rails comply with the requirements of JG/T 5072.3 1996, perfect quality control in process.



## DIMENSIONS AND TOLERANCES

Dimensions in millimetres

Item	b <sub>0</sub>	b <sub>1</sub>	h	u	b <sub>2</sub>	h	l <sub>1</sub>	l <sub>2</sub>	Boil	Washer
	Tolerances									
		±1	±0.2		±0.0	±1.5	±0.5	±0.3		
TK3	72	40	6	3	43	220	90	30	M8×25	A-8
TK5	88	59	10	4.5	50	400	180	20	M12×30	A-12
TK3A	78	50	12	3	45	200	75	25	M10×30	A-10
TK5A	78	50	10	4	45	200	75	25	M10×30	A-10

## Fishplates

### COLD DRAWN GUIDE RAIL FISHPLATES

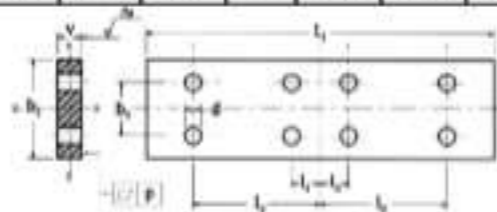
Hongsheng fishplate range also include:

Threaded (tapped) fishplates, minimum clearances seismic fishplate, special fishplate for High Speed application

Hongsheng Type	d	b <sub>1</sub>	b <sub>2</sub>	l <sub>1</sub>	l <sub>2</sub>	l <sub>3</sub>	s	w <sub>1</sub>	w <sub>2</sub>	weight	bolts
	mm	mm	mm	mm	mm	mm	mm	cm <sup>2</sup>	cm <sup>2</sup>	kg/m	size
Tolerances		±1.5	±0.2	±1.5	±0.2	±0.2	-0/+2				
RT45	9	50	25	160	65	15	8	0.53	3.33	0.50	M8x25
RT50	9	50	30	200	75	25	8	0.53	3.33	0.60	M8x25
RT70	13	70	42	250	105	25	10	1.17	8.17	1.29	M12x35
RT80	13	80	42	250	105	25	10	1.33	10.67	1.49	M12x35
RF50	9	50	30	200	75	25	8	0.53	3.33	0.60	M8x25
RF65	10	70	40	160	65	15	10	1.17	8.17	0.83	M10x30
RF70	13	70	42	250	105	25	10	1.17	8.17	1.29	M12x35
RF70-8	13	75	43	240	90	30	10	1.25	9.38	1.33	M12x35
RF75	13	75	43	240	90	30	10	1.25	9.38	1.33	M12x35
RF82	13	80	50.8	216	81	27	10	1.33	10.67	1.27	M12x35
RF89	13	90	57.2	305	114.3	38.1	10	1.50	13.50	2.07	M12x35
RF90	13	90	57.2	305	114.3	38.1	10	1.50	13.50	2.07	M12x35

$$R_o \sqrt{\quad} = \sqrt{\quad}$$

$$p = 0.2 \text{ mm}$$

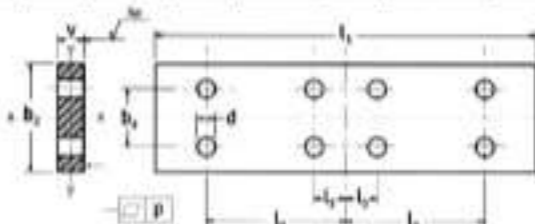


### MACHINED GUIDE RAIL FISH PLATES

Hongsheng Type	d	b <sub>1</sub>	b <sub>2</sub>	l <sub>1</sub>	l <sub>2</sub>	l <sub>3</sub>	s	w <sub>1</sub>	w <sub>2</sub>	weight	bolts
	mm	mm	mm	mm	mm	mm	mm	cm <sup>2</sup>	cm <sup>2</sup>	kg/m	size
Tolerances		±1.5	±0.2	±1.5	±0.2	±0.2	0/+2				
T75	13	75	43	240	90	30	10	1.25	9.38	1.33	M12x35
T78	13	75	43	240	90	30	10	1.25	9.38	1.33	M12x35
T82	13	80	50.8	216	81	27	10	1.33	10.67	1.27	M12x35
T89	13	90	57.2	305	114.3	38.1	13	2.54	17.55	2.70	M12x35
T80	13	90	57.2	305	114.3	38.1	13	2.54	17.55	2.70	M12x35
T114	17	130	79.4	305	114.3	38.1	17	6.26	47.88	5.00	M16x45
T125	17	130	79.4	305	114.3	38.1	17	6.26	47.88	5.00	M16x45
T127-1	17	130	79.4	305	114.3	38.1	17	6.26	47.88	5.00	M16x45
T127-2	17	130	79.4	305	114.3	38.1	17	6.26	47.88	5.00	M16x45
T127-2 c 14	17	130	79.4	305	114.3	38.1	17	6.26	47.88	5.00	M16x45
T140-1	21	140	92.1	380	152.4	31.8	25	14.58	81.67	11.00	M20x65
T140-2	21	140	92.1	380	152.4	31.8	25	14.58	81.67	11.00	M20x65
T140-3	21	140	92.1	380	152.4	31.8	30	21.00	98.00	13.20	M20x75

$$\frac{3.2}{R_o} \sqrt{\quad} \leq \frac{R_o}{R_o} \sqrt{\quad} \leq \frac{5.0}{R_o} \sqrt{\quad}$$

$$p = 0.2 \text{ mm}$$





# Fishplates

## SPECIAL THICKNESS FISH PLATES

Hongsheng fishplate range also include:

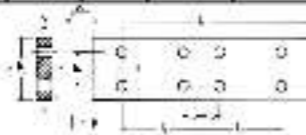
Threaded (tapped) fishplates, minimum clearances seismic fishplate, special fishplate for High Speed application

Hongsheng Type	d	b <sub>1</sub>	b <sub>2</sub>	l <sub>1</sub>	l <sub>2</sub>	l <sub>3</sub>	r <sup>1</sup>	s <sub>1</sub>	s <sub>2</sub>	weight	bolt
Dimension	mm	mm	mm	mm	mm	mm	mm	mm <sup>2</sup>	mm <sup>2</sup>	kg/pc	size
Dimension		±1.0	±0.2	±1.0	±0.2	±0.2	0+0.2				
T75	13	75	43	240	90	30	12	1.80	11.25	1.60	M 12x35
T76	13	75	43	240	90	30	12	1.80	11.25	1.60	M 12x35
T82	13	80	50.8	218	81	27	20	5.33	21.33	2.55	M 12x45
T89	13	90	57.2	305	114.3	38.1	20	6.00	27.00	4.14	M 12x45
							30	13.50	40.50	8.21	M 12x55
T90	13	90	57.2	305	114.3	38.1	20	6.00	27.00	4.14	M 12x45
							30	13.50	40.50	8.21	M 12x55
T114	17	130	79.4	305	114.3	38.1	30	19.50	84.50	8.91	M 16x60
							40	34.67	112.67	11.88	M 16x70
							50	54.17	140.83	14.85	M 16x80
T125	17	130	79.4	305	114.3	38.1	30	19.50	84.50	8.91	M 16x60
							35	26.54	98.58	10.40	M 16x65
							40	34.67	112.67	11.88	M 16x70
							50	54.17	140.83	14.85	M 16x80
T127	17	130	79.4	305	114.3	38.1	30	19.50	84.50	8.91	M 16x60
							35	26.54	98.58	10.40	M 16x65
							40	34.67	112.67	11.88	M 16x70
							50	54.17	140.83	14.85	M 16x80
T140	21	140	92.1	380	152.4	31.8	40	37.33	130.67	15.84	M 20x85
							50	58.33	163.33	19.79	M 20x95
							75	131.25	245.00	29.69	M 20x120

\*T140 thickness under expansion

$$\frac{T_2}{\sigma} \leq \frac{R_0}{\sigma} \leq \frac{S_2}{\sigma}$$

$\rho = 0.1 \text{ mm}$

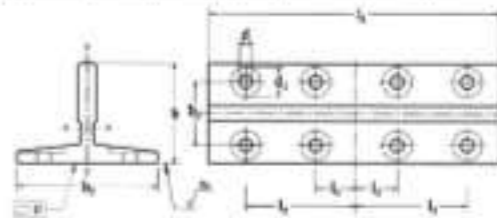


## TSECTION FISH PLATES

Hongsheng Type	d	b <sub>1</sub>	b <sub>2</sub>	l <sub>1</sub>	l <sub>2</sub>	l <sub>3</sub>	h	s <sub>1</sub>	s <sub>2</sub>	weight	bolt	
Dimension	mm	mm	mm	mm	mm	mm	mm	mm	mm	kg/pc	size	
Dimension		±1.0	±0.2	±1.0	±0.2	±0.2	±0.1					
T75	13	26	75	43	240	90	30	81	9.29	7.06	2.1	M 12x35
T78	13	28	78	43	240	90	30	55	7.58	6.71	1.8	M 12x35
T82	13	28	82.5	50.8	218	81	27	86.8	10.2	7.40	1.36	M 12x35
T89	13	28	89	57.2	305	114.3	38.1	81	14.25	11.80	3.8	M 12x35
T90	13	28	90	57.2	305	114.3	38.1	74	20.87	11.80	4.1	M 12x35
T114	17	33	114	79.4	305	114.3	38.1	88	29.70	19.10	5.0	M 16x45
T125	17	33	125	79.4	305	114.3	38.1	81	26.20	25.40	5.5	M 16x45
T127-1	17	33	127	79.4	305	114.3	38.1	88	30.40	23.40	5.4	M 16x45
T127-2	17	33	127	79.4	305	114.3	38.1	88	30.90	36.20	6.9	M 16x45
T127-2 c 14	17	33	127	79.4	305	114.3	38.1	88	31.08	36.25	7.0	M 16x45
T140-1	21	40	140	92.1	380	152.4	31.8	107	53.40	44.30	10.5	M 20x65
T140-2	21	40	140	92.1	380	152.4	31.8	101	68.00	51.20	12.9	M 20x65
T140-3	21	40	140	92.1	380	152.4	31.8	126	114.60	69.40	17.5	M 20x65

$$\frac{T_2}{\sigma} \leq \frac{R_0}{\sigma} \leq \frac{S_2}{\sigma}$$

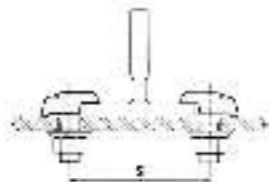
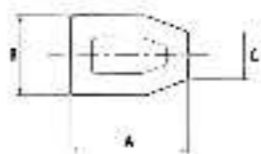
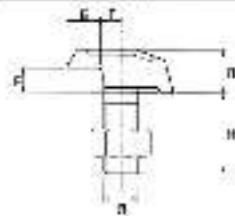
$\rho = 0.1 \text{ mm}$



## T-CLIPS

Hot forged rigid guide rail clamping system. Recommended for application where guide rail stack movement is not expected. These clips come complete with threaded shank and nut. T-Clips are available both in burnished and zinc-coated finishing

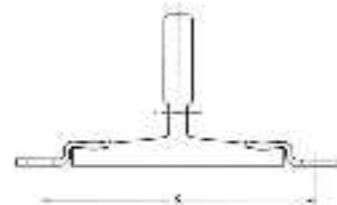
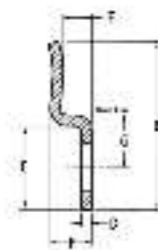
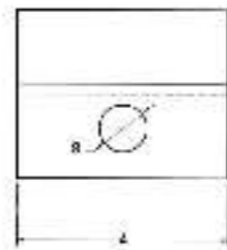
Hanging Type	Applicable Guide Rail Size	B	A	R	C	D	E	F	G	H	S
		mm	mm	mm	mm	mm	mm	mm	mm	mm	mm
Tolerances			±1.3	±1.2	+1.5/-0.4	±1	±1	±0.5	±1	±1.3	±1
T1	T45	M10	32	22	15	12	5,5	5	11	23	52
	RT45										55
	RT50 - T50										60
	RF65										75
T2	RT70 - RP70 - T70	M12	39	26	16	15	7,3	6,5	13	27	83
	RF75 - T75										88
	RF82 - T82										95
T3	RP78	M14	45	29	16	18,5	9,5	8	13	34	94
	RF80 - RP80										105
	RF90 - RP90										106
T4	RP114	M16	60	34	16	20,5	10,5	8,5	15	40	131
	RP125										142
	RP127-1/2 - RP127-2 c14										144
T5	RP140-1 - RP140-2	M18	55	37	18	23	13	11	17	42	162



## SLIDING CLIPS

Pressed steel sliding guide rail clamping system. Recommended for application where guide rail stack movement is required due to thermal expansion or building settlement.

Hanging Type	Applicable Guide Rail Size	B	A	S	C	D	E	F	G	S	Bolt size
		mm	mm	mm	mm	mm	mm	mm	mm	mm	
Tolerances		±0.5	±0.3	±0.5	±0.3	±0.1	±0.3	±0.5	±0.3	±1	
SL - P10	RF88 - RP88	15	76	70	31	5	9	14,5	18,5	178	128
	RF90 - RP90										128
	RP114										152
	RP125										162
	RP127-1										166
	RP127-2 / RP127-2 c14	166									
SL - P20	RP140-1	17,5	76	70	33	5	14,5	20,5	19	178	M16x50

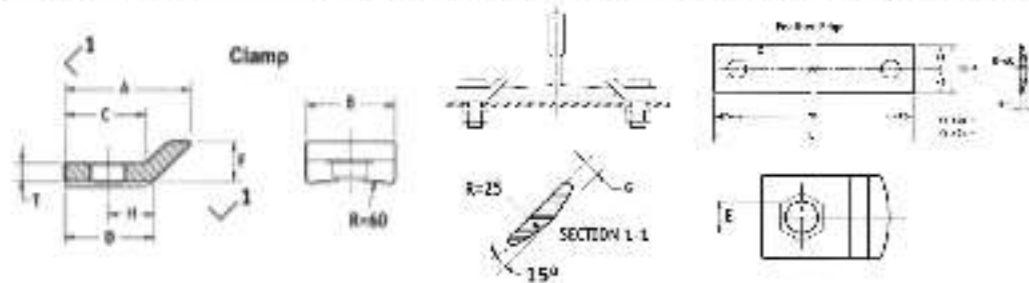


## SLIDING CLAMPS

Hot forged sliding guide rail clamping system. Engineered to provide a point bearing contact used in conjunction with the Feather Edge radius guide rail seat.

This clamp system provides the strength of a forged clip with the flexibility of the sliding clip.

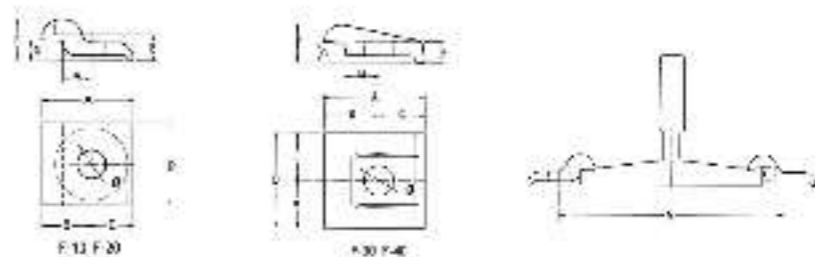
Clamping Type	Applicable Guide Rail Size	A	B	C	D	E	F	G	H	T	L	W	B	Rail Size
		mm	mm	mm	mm	mm	mm	mm	mm	mm	mm	mm	mm	
SL-F 10	RT50 - RF50	44	40	29	33	14	20	8	18	7	129	95	17	M12x45
SL-F 20	RT70 - RF70 - RF70 P	44	40	29	33	14	20	8	18	7	151	117	17	M12x45
SL-F 30	RF75 - RP75 - RP76	44	40	29	33	14	20	8	18	7	156	122	17	M12x45
SL-F 40	RF80 - RP80 - RF80 - RP80	44	40	29	33	14	20	8	18	7	172	138	17	M12x45
SL-F 50	RP125 - RP127-10 - RP127-2 c14	55	45	35	38	18	25	9	18	10	227	183	21	M16x50
SL-F 60	RP140-1	55	45	35	38	18	25	9	18	10	242	198	21	M16x50
SL-F 70	RP140-2	55	45	35	38	18	25	9	18	10	250	206	21	M16x50



## FORGED CLIPS

Hot forged rigid guide rail clamping system. Recommended for application where guide rail stack movement is not expected.

Clamping Type	Applicable Guide Rail Size	A	B	C	D	E	F	G	H	T	L	W	B	Rail Size
		mm	mm	mm	mm	mm	mm	mm	mm	mm	mm	mm	mm	
F10	RF80 - RP80 - RF90 - RP90	41	22	19	41	10	18	8	12,5	14,5	115			M12
F20	RP114													150
	RP125													162
	RP127-1/2 - RP127-2 c14	55,5	30	25,5	51	18	25,5	12,5	17,5	17,5	164			M16
F30	RP140-1													175
	RP140-2	70	38	32	65	18	25,5	12,5	24	20,5	188			M18
F40	RP140-3	70	38	32	76	18	28,5	19	24	20,5	188			M18



## Standard Export Packaging

Packaging in bundles with protection in two ends- Package length: 5000 ± 10mm

### PACKAGING FOR SOLID GUIDE RAILS

Item	Weight/bar (Kgs)	Quantity/bundle (Bars)	Accessories/base (Sets)	Quantity/20'FCL (Sets)
T45/A	16.7	40	1280	1280
T50/A	18.65	40	1160	1160
T70-1/B	37.35	20	560	560
T82/B	42.75	10	500	500
T75-3/B	43.15	10	500	500
T78/B	38.6	10	550	550
T89/B	61.5	10	340	340
T90/B	67.75	10	300	300
T114/B	81.55	10	250	250
T127-1/B	88.85	10	220	220
T127-2/B	112.4	10	180	180
T140-1/B	139.5	5	145	145
T140-2/B	170.5	5	120	120
T140-3/B	230	5	90	90

Inside package with protective covers in two ends of each piece of guide rail, and each bundle wrapped with waterproof sheet.

### PACKAGING FOR HOLLOW GUIDE RAILS

Item	Weight/bar (Kgs)	Quantity/bundle (Bars)	Accessories/base (Sets)	Quantity/20'FCL (Sets)
TK3	13.70	100	1500	1500
TK5	23.00	55	880	880
TK3A	17.00	70	1120	1120
TK5A	24.25	55	880	880

Inside package with buffer material in two ends of package, and each bundles wrapped with waterproof sheet and total placed steel crates.

### QUOTATION

TYPE	QUANTITY	UNIT PRICE	REMARK