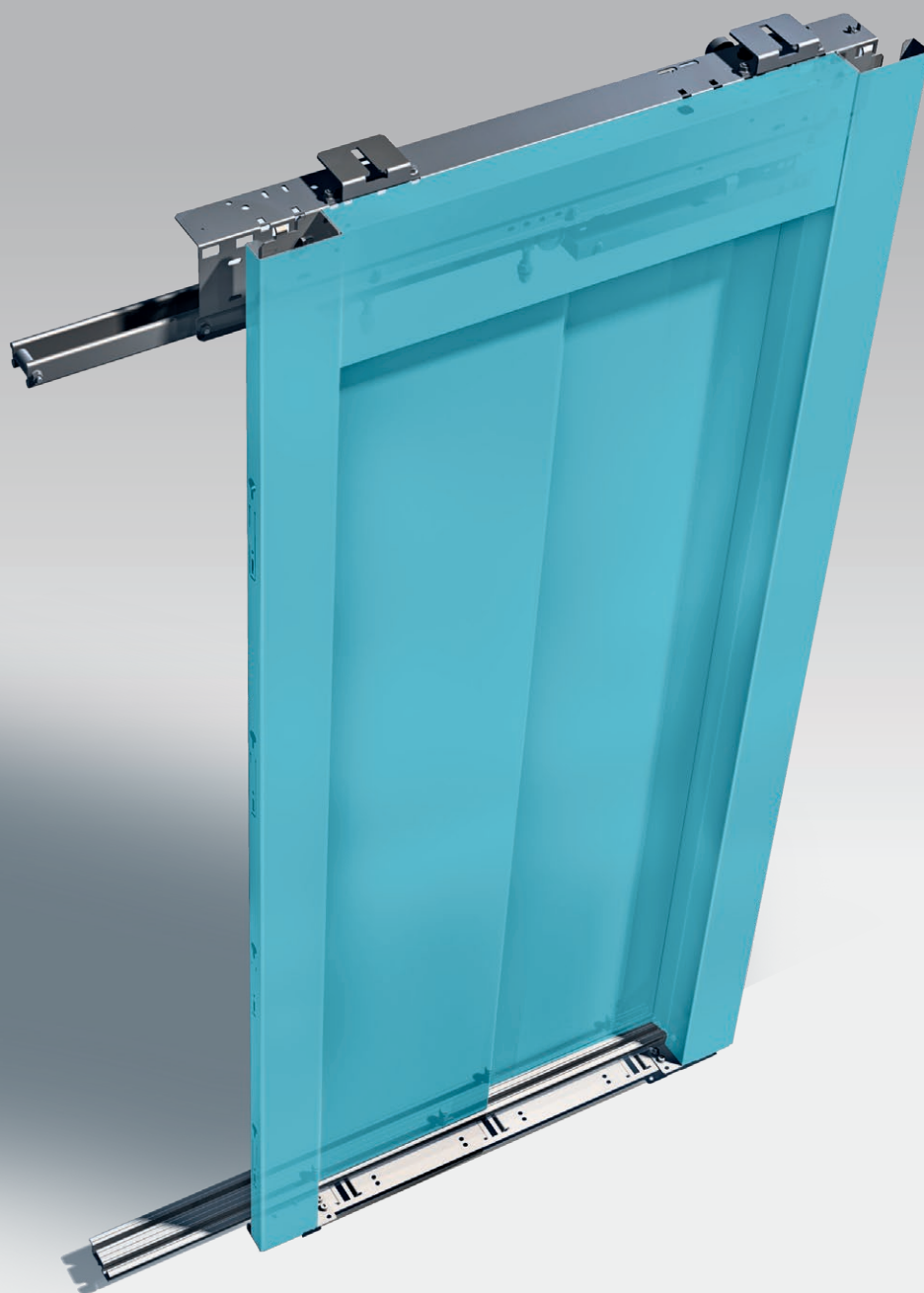




HYDRA

THE VERSATILE DOOR



safety **in** *motion*[™]

Wittur Hydra is the door system designed for the maximum flexibility.

The versatile door



1 Multipurpose

Hydra is available in a wide range of executions, accessories, options to offer the best solution for any installation situation: residential buildings, public buildings, hotels.



2 Sturdy and reliable

Reduced number of components, cathoporesis painting of mechanism to increase corrosion resistance, sealed bearings guarantee the high reliability of Hydra, certified by endurance tests combined with load tests and confirmed by more than 1,000,000 installations all over the world.



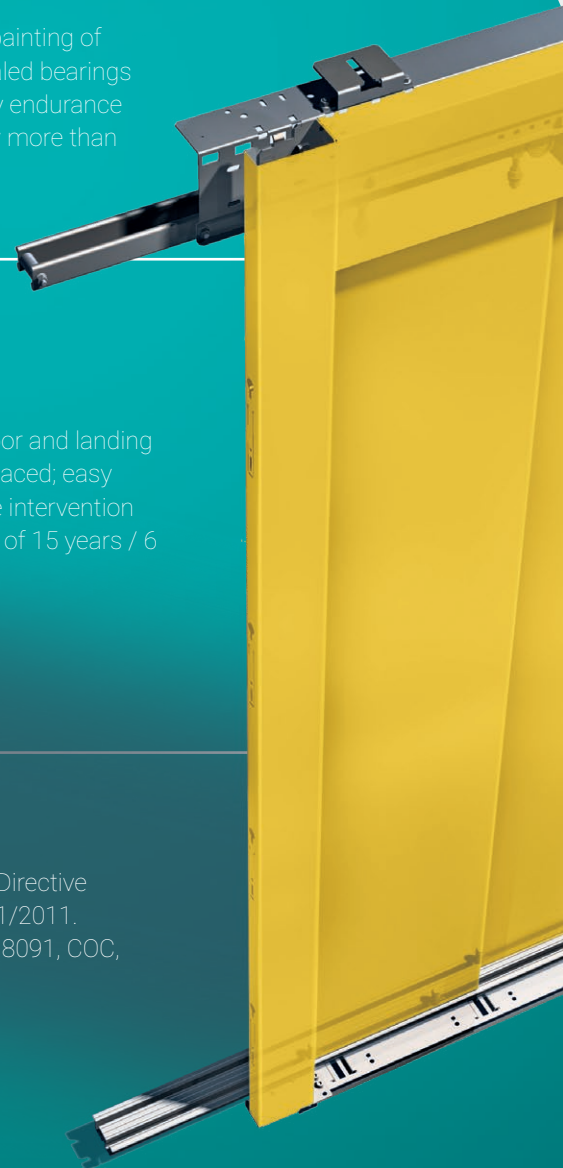
3 Simple maintenance

Same wear and tear components for both car door and landing door; sliding guides which can be individually replaced; easy access to each components: Hydra maintenance intervention are dramatically simple, with a lifecycle in excess of 15 years / 6 million cycles.



4 Certifications

Hydra doors are compliant with the European Lift Directive EN 81-20/50 and Technical Regulation TP TC 011/2011. Certifications include EN 81-58, BS 476-22, DIN 18091, COC, GOST.



5 Easy installation

Hydra door system features many adjustment possibilities on each component to adapt to shaft geometry and obtain the best installation results. It is available in disassembled or assembled version as an option. Door operators are pre-adjusted and factory tested (Plug & Play).



6 Comfort, performance and energy efficiency

Wittur high-efficiency brushless motors with VVVF vector control are designed to reduce energy consumption during operation and are equipped with 0 Watt standby mode.

Wittur drives are able to move panels of different weight installed in the same elevator thanks to their continuous mass detection features.

Rollers of specific material for each kind of application ensure the highest comfort and a reduced operating noise.



7 Executions and finishes

Hydra is available in a wide range of finishes and claddings and can be inserted in any interior design style.

- RAL powder painting
- Stainless steel AISI 304 or AISI 316 cladding
- Patterned stainless steel cladding, various available patterns
- Coloured stainless steel cladding, various available colours and patterns
 - Plasticized metal sheet cladding, various available colours.



8 Modernization solutions

Hydra is the main component of a series of modernization kits for most elevator door OEM's.

Please contact Wittur for more information about the available range of kits.

Hydra

Features



Standard automatic landing door

- EN 81-20/50 compliant mechanism with cataphoresis painting
- RAL 7032 powder painted frames and panels
- Aluminium sill
- Spring-activated reclosing device
- Also available with glass window on panels

Automatic landing door with glass panels

- EN 81-20/50 compliant mechanism with cataphoresis painting
- Tempered laminated glass (thickness: 16.76 mm thick)
- Slam profile in methacrylate
- Aluminium sill
- Counterweight reclosing device

Automatic landing door with glass framed panels

- EN 81-20/50 compliant mechanism with cataphoresis painting.
- Tempered laminated glass
- Flushed glass frames prearranged for laminated glass panels
- Anti-trapping safety device compliant with EN 81-20/50
- Aluminium sill
- Counterweight reclosing device

Door for extreme environment conditions

- Door lock and components in waterproof IP54 execution
- Full stainless steel execution

Special frames

- Angular frames
- Tubular frames
- Ideal for the modernization of existing elevators thanks to reduced dimensions











Hydra

Certifications







Fire rated certification
EN 81-58



Type	Sill width	Class & certificate no. According to EN 81-58
 11/R-L	90 mm	E 15 E 30 E 45 E 60 E 90 E 120 Cert. No. GLD 427
 01/C	75 mm	
 31/R-L	136 mm	E 15 E 20 E 30 E 45 E 60 Cert. No. E 58-027
 41/C	90 mm	
 43/R	90 mm	E 90 E 120 Cert. No. E58-012
 61/C	136 mm	
 65/R	136 mm	EW 20 EW 30 EW 60 Cert. No. E58-003/1
 71/R-L	75 mm	
		Cert. No. GLD 433

Fire rated certification EN 81-58 for fire resistant doors with glass-framed panels

Type	Sill width	Class & certificate no. According to EN 81-58
 11/R-L	120 mm	E 15 E 30 E 45 E 60 E 90 Cert. No. GLD 472
 01/C	75 mm	
 41/C	120 mm	EW 20 EW 30 Cert. No. GLD 472
 43/R	120 mm	



Hydra

Special executions



EN 81-71 vandal resistant execution

Hydra is available in vandal resistant execution according to the European Standard EN 81-71 Category 1, both with standard panels and with glass framed panels.

DIN 18091 execution

Hydra is available in DIN 18091 execution with double skin panels.

Explosion proof execution (ATEX)

Hydra is available in explosion proof execution in full stainless steel with special components according to European Standard EN 1127-1:1997.

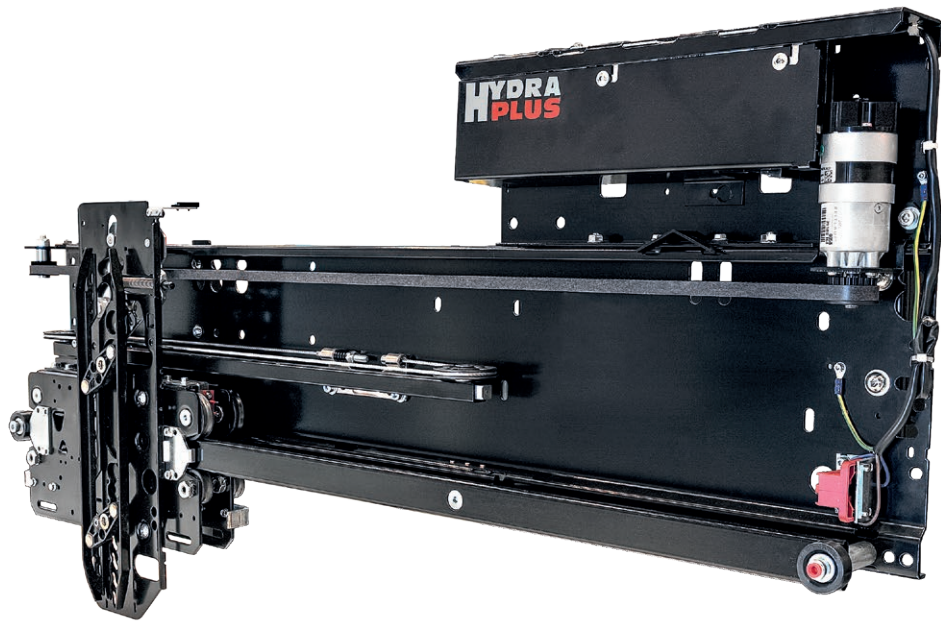
Firefighters elevators execution

Hydra is designed to comply with European Norms EN 81-72 and can be inserted in firefighters elevators.

Marine execution

Hydra doors in marine executions are designed and manufactured to withstand extreme conditions according to the Lift Directive 96/98/EC, MED (Marine Equipment Directive) and IMO (International Marine Organization) standards.

Hydra PLUS



Hydra PLUS car door operator

Hydra car door with Hydra PLUS brushless permanent magnets synchronous motor (PMSM) offers the latest technology available on the market.

Designed for low power consumption during operation and standby, Hydra PLUS with ECO+ offers a power consumption reduction up to 48% compared to previous drive designs.

Hydra PLUS is available with three high efficient drives:

- "ECO PLUS" for low traffic installations (residential, small offices)
- "MIDI PLUS" for medium-high traffic installations (public buildings, offices, prestigious buildings)
- "SUPRA" for high traffic and/or high performance installations (hotels, hospitals, public building, marine installations, prestigious buildings).

Features

- EN 81-20/50 compliant mechanism with cataphoresis painting
- Pre-configured from factory - no on site adjustments (plug and play)
- Fully electronically controlled closing force
- 24 V emergency battery supply input
- Adjustable open force limitation
- Different settings for modernisation purposes
- 24 V supply output signal to light curtains or photocells
- Self-diagnostic system
- CAN-Open interface available as option on Wittur door drives
- Energy certification according to VDI 4707-2.



“ECO PLUS” drive:
for low traffic elevators
(residential buildings, small
offices).



“MIDI PLUS” drive:
for medium-high traffic
elevators (public buildings,
offices, prestigious residential
buildings).



“SUPRA” drive:
for high traffic elevators
(hotels, hospitals, ships, public
buildings, offices, prestigious
residential buildings).

Drives	ECO +	MIDI +	SUPRA
Motor Characteristics	AC 3 Phase Motor		
Drive	V3F - Converter		
Average Power Consumption	60W	120W	170W
Max Momentary Power Consumption	100W	550W	900W
Power Supply	Univ.(230V; 1A)±20% 50/60Hz	Univ.(230V; 4A)±20% 50/60Hz	Univ.(230V; 4A)±20% 50/60Hz
Noise Level (Door Operator)	average 55 dB, max 60 dB	average 55 dB, max 60 dB	average 50 dB, max 55 dB
Protection Class	IP20	IP20, option IP54	IP20, option IP54
Regulations and Standards	EN 81, GOST, European Lift Directive	EN 81, GOST, European Lift Directive	EN 81, GOST, European Lift Directive
Electromagnetic Compatibility	Immunity and Emission Protection acc. EN12015/16		
Maximum Movable Masses (Car and Landing Door Panels)	130 kg	300 kg	700 kg
Passenger Protective Device	Light Curtain		
Car Door Lock (Optional)	Available		



PRODUCT RANGE HYDRA

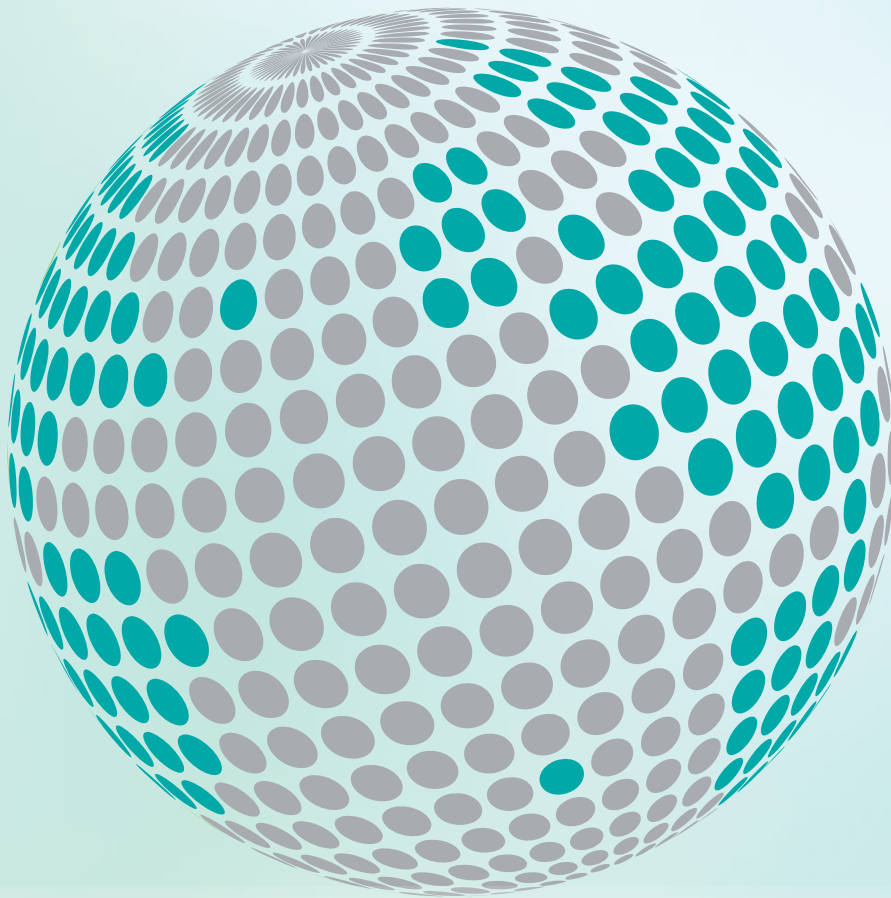


Pos.	Series	Landing doors		Car doors		C.O. mm		L.H. mm	
		Type	Illustration	Type	Illustration	Min.	Max.	Min.	Max.
Door with operator above	3201	01/C		02/C		600	1800	1900	Note: maximum clear opening height 3500 mm. Subject to clear opening width
		11/R		12/R		600	1800		
		11/L		12/L		600	2100		
		31/R		32/R		600	1400		
		31/L		32/L		600	1400		
		31/R		35/R		600	1400		
		31/L		35/L		600	1400		
		41/C		42/C		1200	3200		
		43/R		44/R		600	1150		
		61/C		62/C		1500	3200		
		65/R		66/R		900	1450		
		71/R		72/R		600	1400		
		71/L		72/L		600	1400		



WITTUR

YOUR GLOBAL PARTNER FOR COMPONENTS, MODULES AND SYSTEMS IN THE ELEVATOR INDUSTRY



wittur.com



SELCOM[®]
a WITTUR brand

Liftmaterial
a WITTUR brand

sematic[®]
a WITTUR brand